

Weldon Parish Council connecting our community

WELDON



WIDE

Winter 2023

Magazine

Weldon in
Bloom

WELDON FETE
**the
BIGGEST
Yet!**
2023

NEW DEVELOPMENTS

*Preparing
for Christmas*



Weldon Manor

CORBY, NORTHAMPTONSHIRE

1, 2, 3, 4 & 5 BEDROOM HOMES AVAILABLE



Need a helping hand with moving?

Let us take care of it

WITH A RANGE OF TAILORED INCENTIVES



At Taylor Wimpey, we're here to make your move easier than ever. Discover our range of incentives including contributions towards your deposit or mortgage, Keyworker discount, Part Exchange or Easymover. Get in touch today to find out more!

Introducing Weldon Manor, 1, 2, 3, 4 & 4 bedroom homes now available in the thriving town of Corby.

Scan the QR code to book your appointment today!



WELDON MANOR
PRIORS HALL, CORBY,
NORTHAMPTONSHIRE
NN17 5FY

#taylorwimpey
Call 01536 211 093
taylorwimpey.co.uk



**Taylor
Wimpey**

Merry Christmas from Weldon Parish Council



The sun shone, the rain fell and the heat soared, but none of this deterred us Weldonites enjoying a variety of activities. Thank you for sharing your photos and articles on the events from the last few months.

This is the 6th issue of your parish magazine and is just one of the ways we can find out about our community, such as planning developments, projects open for all to join in, events and support offered.

The articles in this issue will answer some of those questions raised by yourselves, when contacting

your Parish Councillors, postings in Facebook or arranging a meeting. Sue Cook, our clerk, will always help to answer any questions you have, so do use the contact details below to get the updated information.

The colder months are upon us so check out the What's Happening page to see what events are on, projects to get involved with and maybe make new friends. Parish information and news will also be posted on our new notice boards.

Weldon Parish Council,
www.weldonparishcouncil.co.uk



We are happy to receive relevant articles from the public. Send in your photos (high quality originals please) and article of no more than 350 words to apweldonpc@gmail.com

Advertisers

Adverts for publication in Weldon Wide (WW) are accepted at the discretion of the Weldon Wide Editing Team (WWET). The WWET is not liable for loss or damage due to error, late publication or failure of an advert to appear. The WWET reserves the right to alter, amend or edit advertisements as appropriate. Advertisements do not represent an endorsement of a product, company or person(s) by WPC.

Submissions

In case of inadvertent error or omission, the WWET will make the necessary correction in a future issue. The WWET reserves the right to edit any article as

necessary. All material included in WW may be reproduced with or without permission, provided acknowledgement is made of the author. The WWET reserve the right to select or reject letters for publication and to edit for grammar, length and style. We will only publish items appropriate for this magazine that supports and connects the community. Advertising specifications are available by contacting: apweldonpc@gmail.com

WW is produced by WPC and distributed to all the residents of Weldon (this includes the areas of Priors Hall Park, Weldon Village and Weldon Park)

Cover photography: Angela Page.

Connect to Weldon Parish Council

Sue Cook, Clerk
07484658147

Scan the QR code or visit
weldonparishcouncil.co.uk



Join our Facebook
and Instagram pages
[@weldoncouncil](https://www.facebook.com/weldoncouncil)



To register for WPC information,
please email "I consent" to
scweldonpc@gmail.com

WHAT'S HAPPENING

December: Dates for Your Diary

Christmas Wreathmaking Workshop:

**Saturday 2nd December from 7:00pm
at Weldon Village Hall. Tickets: £32.00**

Make a Christmas Wreath, while enjoying mulled wine/tea/coffee and a mince pie with friends. For more information and to book email: amytibble@gmail.com

Tree Lighting & Carols:

Monday 4th December, 8:15pm at the Triangle The Parish Council would love

you to join them at the Triangle, near Londis, on Corby Rd, to brighten up the village.

A Celebration of Christmas:

**Friday 8th December from 7:00pm at
St Mary's Church. Tickets: £8.00 adults;**

Under 15s: Free More details are on page 16. Includes refreshments. Purchase tickets:

Paul Kerfoot 01536 268358

Sue Singlehurst 01536 203649

Online: stmarysweldon.org/singlehurst-trust/

Regular Groups

Little Stars Baby and Toddler Group

meets every Thursday, term time, from 10:00am–11:30am at Priors Hall Community Centre. For more information contact:

Louise on 01536626361 or

www.stmarysweldon.org/book-events-here/



Rock Solid Youth Group is a weekly session open to all 11–17 year olds, term time, every Monday at Priors Hall Park Community Centre, 6:30pm–7:45pm.

For more information contact:

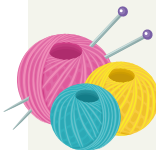
kirstie@stmarysweldon.org

Book places at

www.stmarysweldon.org/book-events-here/

Hope Cafe every first

Wednesday of the month starting at 10:00am at the Cricket Club in Weldon Village. A supportive and friendly group.



Weldon Not Just Knit and

Natter takes place every Tuesday at 2:00pm in the Shoulder of Mutton. A good opportunity

to natter while making some lovely creations. Check out the facebook page.

Weldon Book Worms the third Wednesday of the month, from 7:00pm in the Shoulder of Mutton. The latest book choice and book reviews are posted on the facebook page of the same name.



Weldon Parish Council

every first Monday of the month, 7:00pm. We welcome the public's attendance.

Please try to email any questions for the Parish

Council at least one week before the meeting to Sue cook on

scweldonpc@gmail.com

The same email address can be used if you wish to attend any of the working groups: Traffic, Parish Maintenance, Planning or Communications. These are held via zoom so in the comfort of your own home.

Weldon in Bloom Project

Meets at the Cricket Club. Meeting dates are posted on our website:

www.weldonparishcouncil.co.uk



Councillor's Corner

Meet Sue Cook

Weldon Parish Council Clerk



I'm a Weldon girl born and bred. So-much-so that looking through the Parish Council archives, it seems, my Great Grandfather was one of the first Parish Councillors on Little Weldon Parish Council in 1898. The Parish at the time was split in two.

Even Dad was a Parish Councillor for a while so I guess it's in my blood. Unfortunately I am the last one of the family left living in Weldon.

I married a Benefield lad in 1977. Our son was born in 1982 and is now married with 2 children of his own.

I worked full time at Avon Cosmetics as a key-writer for almost 20 years, but was made redundant when an automatic order reading system was introduced along with most of the other key writers. The rest of my working career was spent in supply chain first for Curver and then Ashbury Confectionery/Chocolates.

I took early retirement from full time working in 2017.

In 2013 I became Parish Clerk and Responsible Financial Officer (RFO) to a local Parish Council. At the first meeting I hadn't got a clue what I was doing, some would say I still don't. With perseverance I continued and became confident in the role having six Parish Councils under my wing, all very small Parishes, nothing the size of Weldon.

In 2020 I became the interim Clerk and RFO for Weldon quite by accident and I must say that although there have been many ups and downs I do enjoy it. The Councillors are a great bunch and are really supportive, no two days are the same with many committee meetings to prepare for as well as full council meetings, keeping the accounts up to date, answering emails and attending training courses (yes even now I still need to keep up to date with different courses).

“When I am not carrying out my clerk duties, I can be found with a piece of cross stitch in my hands – or watching tennis, cycling or rugby on the TV.”





WCC Senior Team v Gretton for the Rose Bowl

A wicket year

It's been a really exciting yet challenging year at Weldon this year, continuing to run 3 teams in the Northants Cricket League.

Our first team competed very well in Division 3 and have pushed all the way towards promotion with some very good results this season.

The second and third teams have had a more challenging year but it's been a really enjoyable season, some excellent performances in all teams and as always, regardless of the results we have all had fun playing at Weldon. Win or lose, the teams are always found back at the club enjoying a few drinks together after the games.

We are pleased to welcome new faces into the club this year from the local community. This has helped to strengthen our squads, whilst also bringing through the next generation of adult cricketers from the youth set up.

The youth teams are continuing to develop at Weldon and it will be great to see more and more youngsters developing their skills at Weldon CC.

We are always open to new players at Weldon and there will be more information from the club in the coming months about our Winter net sessions which are due to start in January.

Ryan Jenkins

Weldon in Bloom



As we prepare our gardens for winter, our volunteers have been out planting 3000 bulbs in readiness for spring, tending to the flower beds and seeding the wildflower areas.

All building up to brighten up our village and enter Weldon in Bloom, the RHS Britain in Bloom competition.

Our entry in 2024 is for the RHS national competition Large Village category. Priors Hall Park and Weldon Park are still in the hands of the developers, so the competition area will be confined to Old Weldon Village.

However we know there are some enthusiastic gardens in all of Weldon and hope you will show your green fingers and creativity by entering the 'Best Front Garden' and the 'Wacky Planter Competition'. These will be judged at the same time as the RHS competition in July. More information will be posted, so keep an eye on our website, facebook page and noticeboards.

Weldon in Bloom will be split into different areas, so any help to develop a small part would make such a difference for all of us to

enjoy the achievements of this community. You don't have to be the best gardener just willing to give a bit of your time for this project. Maybe you could take pictures or write small articles to record the project, these will form part of the brochure we need to prepare for the RHS judges.

We would love to hear from you, so please contact either Sue Cook our Parish Clerk – scweldonpc@gmail.com – or come along to the Weldon in Bloom meetings. Details in the minutes available on our website <https://weldonparishcouncil.co.uk/weldon-in-bloom/>

If you or your company would like to advertise locally you may wish to sponsor one of our flower beds or one of our competitions. Please contact us for details and help us all to flourish!



WALK ABOUT



The weather held for the councillors to complete their third walkabout in another area of Weldon.

This time we started at Harvest Close, walked around to the play area, which is due for development with new equipment, and crossed over Oundle Rd to wander about Weldon Park.

We were joined by residents and met others as we walked some roads either side of Airfield Way. We suggested the residents consider forming a Neighbourhood Association to discuss how the maintenance fee is spent by Greenbelt management company. WPC can help with contacts to establish this support forum.

We have noted the following concerns:

- School gate footpath has no lights or bins.
- Congestion during student drop-off times near the school gate and on private roads
- There are shrubs around the play area but no barriers on the footpath, which goes directly to the road.
- Inconsistency of road signs for the drives and those privately owned.
- Inconsiderate parking near bends and causing drivers to be unsighted when coming out of roads. Parking on pavements and reducing the speed of cars.
- Footpath from the school gate runs all the way to the houses on East Crescent Rd BUT not connected. If a bridge could be built, students could walk this Footpath and not along Oundle Rd.

These points will be reviewed. We have also suggested residents take up the neighbourhood watch scheme.





Warming up winter

When plants go dormant in the winter and there's not much to tend to, there are always jobs to do in the garden, making your Spring gardening easier.

Tidy the shed and greenhouse and other workplaces, organising pots, tools and seeds for next year's sowing. Carry out repairs too.

Service your mower and other garden machinery. Keep adding to your compost heap, you'll need this come spring planting time. Don't turn, you'll keep that all important heat in. They might even be hibernating wildlife in there, so take care.

Our winged wildlife will need a helping hand, especially if it gets too cold with lots of

snowfall. Keep bird feeders, topped up.

Brighten up the dull days by creating a colourful winter container, there are lots of winter planting that will give a welcomed splash of colour.

Wrap up and take a brew into the garden. Take in the seasons colours and wildlife activity whilst enjoying a breath of fresh air, some of the icy mornings can be quite pleasant if the winter sun puts in an appearance. Keep warm and enjoy!

CONNECTING OUR COMMUNITY



WPC have been working to get more notices boards about the Village. Two have been erected so far. One on Corby Road by the junction of Water Lane and Hillside Crescent.

The second board has been placed by the bus stop on Oundle Road. We would like to thank Mulberry Developments for the donation of this noticeboard.

WPC will continue to work with all developers for the benefit of this parish.



Bug Hotel in place

WPC say a big thank you to Brian Scott of BAM (Weldon Village Academy developers) for supporting our community project by bringing in DWJHarkins to change an overgrown area, that with further work, becomes a Sensory Pathway at the Gandy Field.



From residents' requests, WPC has placed a new dog bin on Larrett Road.



To report issues on roads, pathways, blocked drains, grit bins or signs, visit fixmystreet.northamptonshire.gov.uk





Weldon Cricket Ground was bursting at the seams on 28th August 2023 with the Weldon Village Fete welcoming over 3,300 visitors to this much loved village event.

The weather was kind and the rain stayed away, much to the relief of the 40+ stall holders (and organisers!!). Our biggest fete to date, offering an array of stalls and attractions including handmade crafts, books, jewellery, wooden garden ornaments, food, games and free activities including balloon modelling and circus skills.

From dogs to dinosaurs and Vikings there was something for everyone. The Cricket Club bar kept everyone hydrated, the DJ kept us entertained, Katy's Canine Coaching taught the dogs a few new tricks, St Mary's Church provided tempting yummy cakes, raising £588.00 from cakes donated by the church community. Rock Solid Youth Club raised funds to support local activity.

Buddy's Dog show was a highlight of the afternoon with 70 dogs strutting their stuff in the hope of becoming best in show.



Bethan & Coba won 1st place



The Fete Committee is a group of local volunteers who work tirelessly to organise the event and make the event bigger and better each year, however we could not do it without the financial and in-kind support from some key people and organisations.

A BIG THANK YOU GOES TO:

Grant funding provided by Weldon Parish Council.

In-kind support: Weldon Village Hall, Weldon Cricket Club, Corby Radio, BBC Radio Northampton, Corby Fire Brigade, Vikings of Mercia, 422 Corby Squadron Air Cadets and Corby and District Model Railway Society.

Raffle prizes donated by West Lodge Farm, The George, GlamRus, The Village Kitchen, The Cricket Club Bar and The Purple Butterfly

... and of course all our lovely stall holders who join us every year!

Follow us on Weldon Village Fete Facebook page for updates on next year's plans. To book a stall (limited places), please book by emailing weldonvillagefete@gmail.com



We have a motto that is important to all of us, big or small:

"In a world where you can be anything, be kind."

We warmly welcome visits to our school. The children would be thrilled to show you what makes Priors Hall – a learning community, such a wonderful place to be!



Nursery

Led by a fully qualified teacher and early years experts, the team create an individualised and responsive curriculum for each child in our care; founded in experience

and expertise. We have children's emotional wellbeing, meaningful learning and personal progress at the heart of all we do. We provide extensive opportunities for play and promote a lifelong love of learning!



School

As soon as you set foot into the building you are greeted with a smile, whether that be from a child who comes to the school or an

adult who works here. We have high expectations of each other and a strong set of values that we all aim to be: kind, resilient, respectful and curious.



ST MARY'S DAY SHARING TRADITIONS



This day was made possible by Dana's love of culture and traditions and Tatiana's willingness to help with ideas and behind-the-scenes planning, which takes a lot of time.

The CorbyCAN team put together a day of memories and people said they want "many more, more often."

The day was full of traditional delicious food and goods, gifts, and entertainment such as live music, dancing and gymnastics. Hundreds

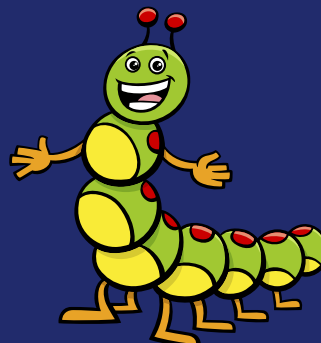
of people came, stayed and had a great time. This shows that it wasn't only Romanians and Moldavians who were keen to celebrate their traditions. People from numerous nations and nearby areas wanted a taste of the international roots.

Thank you to everyone who helped, including Weldon Parish Council and all the volunteers; we couldn't have done it without you.

Missing home but finding comfort together.



Creative play in action!



Weldon Parish Council are often approached for grant requests to help with funding for lots of different things.

Carlene, Weldon Pre-school Manager, attended a full council meeting to discuss the new equipment they needed to replace the present tired and broken items. COVID had affected any fundraising events being held. This discussion also led to a grant to replace the damaged Pre-school sign, which looks great!

Cllr Gibson, was invited to a morning play session to see the new equipment in action, and she talked to some of the children and got their take on the new play pieces. She took time to sit and read The Hungry Caterpillar story to a few children, who were very interactive and evidently knew the story very well.

Some of the grant was spent towards a special treat for the children before the summer break. A group of small animals were brought in so the children had something different to do. Carlene told us that this is sometimes done so that the children's activities are kept exciting, educational and FUN!

WPC are pleased the grant has enhanced the facilities for Weldon Pre-school.

WPC are here to listen, help and support where we can.
Visit weldonparishcouncil.co.uk

The new play equipment

Art activity board with paper, pencils, crayons and scissors. The Hungry



Caterpillar. The outdoor & indoor play kitchen encourages creative play.



UPDATES ON DEVELOPMENTS IN WELDON



Magna Park development Cowthick

When GLP (Company) took on ownership of this site in 2021, WPC maintained contact at director level. Along with other Parish councils along the A6116 we meet for updates, most recently in July 2023.

The first building is expected to be finished by the end of 2023, its fit-out will then commence and the modular building manufacturer Top Hat expects to move in late 2024.

As part of the planning GLP are providing a flood relief system in the woods by the A6116, protecting Stanion, Brigstock and Sudborough from Harpers Brook in exceptional weather.

They also intend to construct woodland walks and all terrain cycle tracks for local use. GLP wants to be good neighbours, we'll continue working with them to create the best outcomes for our community.

Rockingham Gate Warehouse - CEVA

WPC recently met with Mulberry and informed us that construction is due to start in spring 2024. They have negotiated increased landscaping with Urban & Civic (U&C), by providing £75,000, to support residents' concerns. It is agreed that U&C will complete the works on the southside of the site, to include the roundabout.

In addition, Mature tall trees will be planted to further provide a screen for the residents. So tripling the number of trees presently in place.

It was noted that CEVA can change use of the warehouse although storage of pharmaceuticals is the current intended first use.

The depot entrance and exit point is as per the original and current planning consent, this arrangement removes the need to cross the dual carriageway to enter the depot.

Mulberry owns Weldon Lodge and wishes to work with WPC to consider ideas of how to use this building for the benefit of the community. Discussions will continue.



REACHING NEW HEIGHTS

Year 6 children from Weldon CE Primary recently went on a five-day residential to Whitemoor Lakes in Staffordshire, challenging themselves (and their teachers) to all sorts of different activities.

It started with children afraid of heights but by Friday they were throwing themselves off high towers (harnessed and safely of course!). They all had a fantastic time and it was lovely to see them all grow in confidence as the week progressed. Here are just some of their highlights:

"I enjoyed the leap of faith because I love anything to do with heights. Although some of my classmates were scared, I wasn't, and managed to reach the top and leap onto the bar!"

"My favourite activity was sailing because it was very funny when me and my friend tried to control the boat against the wind! We also ran over a buoy in the lake. We were stuck for a little while but it was super amazing."

"I had the time of my life! I like the zipwire because it was really simple to do and I got to

do it three times. All of my friends enjoyed it. I went on it forward and no-handed!"

"My favourite activity was fencing because I love watching it on the TV so doing it in real life was amazing. Although the mask was very hot, I had a blast trying to catch people out. While we were fencing, the instructor played music."

"My favourite activity was the zipline because we jumped off an abseiling tower. You could go backwards and upside down. Me and my friends jumped off. There was a man at the bottom who caught your rope."

"It was a truly thrilling experience. I liked abseiling the most. At first I was terrified at the thought of going down a tower that high! I decided to go down and it was so fun and very exciting."

A
FUNDRAISING
EVENT

Singlehurst Charitable Trust presents...

A Celebration of Christmas

Friday 8th December, 7:00pm–9:00pm

The concert will be an eclectic mix of entertainment,
held at St Mary's Church

Tickets £8.00 per adult; Children under 15 FREE
Includes light refreshments & raffle at the interval

Supported by: Weldon School (music & readings)
& Weldon Amateur Theatre School

Tickets from Paul Kerfoot 01536 268358
or Sue Singlehurst 01536 203649

Pay online at: stmarysweldon.org/singlehurst-trust

SATURDAY 2ND DECEMBER, 7:00pm–7:30pm START
Weldon Village Hall, NN17 3HE

£32 per ticket
Includes mulled wine
or tea & coffee &
mince pie

MAKE A *Christmas* WREATH

Bring a bottle
and some
secateurs or
scissors

For tickets & info, email
amyetibble@gmail.com

Singlehurst Charitable Trust

Founded in June 2015 by the late John Singlehurst and his wife Sue.

The purpose of the Trust is to provide outdoor and indoor recreational and sporting facilities for the Parish of Weldon, this now includes Priors Hall Park and Weldon Park.

The initial donation into the Trust by John, a keen cricketer, was a gift of the cricket field which has been owned by the family for almost 100 years. The Trust will continue to ensure the field is used for cricket, for this

and future generations. In turn the Trust leased the field to the Cricket Club for 125 years at a peppercorn rent.

Today, Sue and her fellow Trustees continue to raise funds for the Trust. If you would like to apply to the Trust for a grant for your club or organisation then please contact the Trust in writing to the Manor House, Oundle road, Weldon, NN17 3SJ.



WELDON

Advent Angels

Look out for an angel left out each night, around the parish, from 1st to 24th December. When you find the angel it's yours to keep!



HOT TOPIC

Traffic & arking

The Traffic Working Group meets regularly and welcomes residents to join the meetings held by zoom. Members recently met NNC Highways with Tom Pursglove MP to discuss the process to move forward with the various proposals to make Weldon safer.

WPC hear of parking issues that cause distress to pedestrians and drivers alike. If you park your car on the pavement or on a bend, or a junction it can cause a major hazard as it reduces visibility for other motorists and

pedestrians crossing the road, as stated in the Highway Code.

It is useful for us all to be reminded of the Highway Code, which may have changed since you passed your test, and help us all to be considerate to others.

Check it out for the full advice on www.highwaycode.org.uk/parking/

So please - **Think Safe and be Road Wise.**

Rule 243 DO NOT stop or park:

- near a school entrance
- opposite or within 10 metres (32 feet) of a junction, except in an authorised parking space
- near the brow of a hill or hump bridge
- opposite a traffic island or (if this would cause an obstruction) another parked vehicle
- where the kerb has been lowered to help wheelchair users and powered mobility vehicles
- on a bend

And some points in **Rule 239**:

- do not park facing against the traffic flow
- do not stop too close to a vehicle displaying a Blue Badge: remember, the occupant may need room to get in or out
- you **MUST** ensure you do not hit anyone when you open your door. Check for cyclists or other traffic by looking all around and using your mirrors where you are able to do so
- it is safer for your passengers (especially children) to get out of the vehicle on the side next to the kerb



Councillor Dick Priem

After 12 years of dedicated work, Councillor Priem has decided to step down as a Parish Councillor. WPC members thank Dick for his passion and service to Weldon, both at meetings and helping to maintain the Village.



The Christmas Memory Tree



The Christmas tree at St Mary's is traditionally decorated with gold cards bearing names and messages to remember loved ones who we have lost.

Gold cards and envelopes for donations will be available in the church. If you would like a card but are unable to come to church, please contact Sandra Whitlam on 01536 265004 or any church member and they can be brought to you.

The Church will open for Memory Tree Day on Saturday 16th December from 9:30am till 4:00pm, when tea and coffee will be available and on Sundays over Christmas.

All donated gifts are for the ongoing work of the Church in Weldon.

In Memorium

Paul Ayres

CLlr Angela Page opened the September Full Council meeting by announcing the sad passing of Mr Paul Eyres, Mr Eyres had been Clerk to the Parish Council for 26 years. The Current Clerk represented the Parish Council at his funeral.

Hallie Colquhoun

Weldon paid tribute to a young talented dancer Hallie, who sadly died in a car crash, by laying flowers on the Village Green. Our thoughts and prayers go to her family.



The true joy of Christmas

I am sure there have been many Christmas traditions that we will uphold this year, but for me the most important tradition is to remind myself of the promise that God's love has been personified in the birth of His son on earth, but why in the middle of winter?

People might say that the 25th of December is not the actual birthdate (in truth we cannot be certain of the date but this seems about right) and that the date was hijacked by the Church from the pagan's celebration of the winter solstice – sure that is true and we should not hide those realities. However, the original intent from the Roman empire was to set aside a date to celebrate something far greater than the nights drawing out and the rebirth of spring. The date was put in the calendar to remember and celebrate that Jesus the son of God was born and this event is the most significant event in human history – superseding all else that went before him.

There have been new traditions that were added over time, like Christmas trees, lights, puddings and presents – all good things to help us celebrate. But have those things crowded out the nativity scene and are we in danger of forgetting why Christmas is celebrated? If you have felt there has been something missing from your Christmas over the past few years maybe it is time to re/ explore the nativity story and to discover the true joy of Christmas – that:

“God so loved the world that he gave his one and only Son, that whoever believes in him shall not perish but have eternal life.” John 3:16.

Perhaps you would like to re/establish an old/ new tradition and look into the reality of what Christmas is truly celebrating, then come and join us. We are also going to be running a “Life explored” course after Christmas where we will look at what it takes to be fulfilled in today's world, if you are interested then please get in touch to find out more. In the meantime I wish you every blessing this Christmas.

Blessings



Kane, Rector

St Mary's and Priors Hall Community Church

CONTACT

Vicar Kane:

01536 626361

kane@stmarysweldon.org



CHRISTMAS AT ST MARY'S CHURCH

8th December	7:00pm	Concert by Weldon Singlehurst Charitable Trust
16th December	9:30am–4:00pm	Christmas Memory Tree
17th December	10:15am–5:00pm	Nativity; Lessons & Carols; Blessing of the Memory Tree
24th December	5:00pm–11:00pm	Christingle Service Christmas Eucharist
25th December	10:00am	Christmas Morning with the Rector
31st December		No Service



Weldon Youth Work

Proud Winners of the NAYC President's Cup 2022!!!

Our Youth Work team have a wide range of activities for young people aged 11-17 yrs. Sports, craft, board games, music, group activities, tuck shop and regular events. A great place to meet friends and try new things.



**Meeting at Priors Hall Park Community Centre
Mondays in term time 6:30-7:45pm**

PREVIOUS EVENTS - Night Walk, Paddleboarding, Football Coaching, Climbing, Glass Art, Cricket, Tomahawk throwing, Bucket drumming, Cricut, Theatre trip, Pyrography, Dodgeball, Sumo....

WHAT ELSE DO WE OFFER? A weekly youth church for young people wanting to learn more about the Christian faith. Parenting courses for all parents. Community Events and Fundraising.

HOW CAN I GET INVOLVED? Volunteer as an adult or young leader!

For further information contact

kirstie@stmarysweldon.org

Or book your place at www.stmarysweldon.org

