



Weldon

Neighbourhood Plan Consultation Summary

13 July 2019

Introduction

Weldon Parish Council organised a drop-in event on Neighbourhood Planning which was held on 13 July 2019. The event took place between 9:00 am and 12:30 pm on the Village Green.

The aim of this event was to help engage the community in the Neighbourhood Plan and to seek comments on the emerging topics – including Local Green Space and environment; community facilities and amenities; housing and design; transport and employment.

The drop-in event was promoted through banners that were located throughout the Parish, and through leaflets distributed to each household in the parish magazine. The event was promoted on the Parish Council and Village websites and through the Parish Twitter account.

In total, 77 people attended the event, with 17 expressing an interest in becoming involved in the process.



WELDON PARISH COUNCIL

Neighbourhood Development Plan



This is your chance to help shape
the future of YOUR Village

OPEN DROP-IN EVENT

SATURDAY 13 July 2019,
from 09:00 Am to 12:30 pm
on the Village Green

Come and join us for breakfast!

The Neighbourhood Development Plan will consider issues
such as:

- Where should any further new housing go. what type of housing should it be and what should it look like?
- What open spaces do we want to protect?
- Do we need better community facilities? What type of facility?
- Are business and employment needs catered for in the parish?

Format of Event

Attendees were welcomed on arrival and asked to complete a contact sheet to record attendance. The arrangements for the day were explained.

The first displays introduced neighbourhood planning and described the process that is being followed by the Parish Council. Copies of explanatory booklets were available for reference and copies of finalised Neighbourhood Plans for other parishes were available for people to read as they walked around the displays.

A large-scale map of the Conservation Area which was supplied by Corby Borough Council was on display for reference.

Consultation on key issues

A series of display boards were spread across the room, each of which focused on a different topic related to planning and development, including:

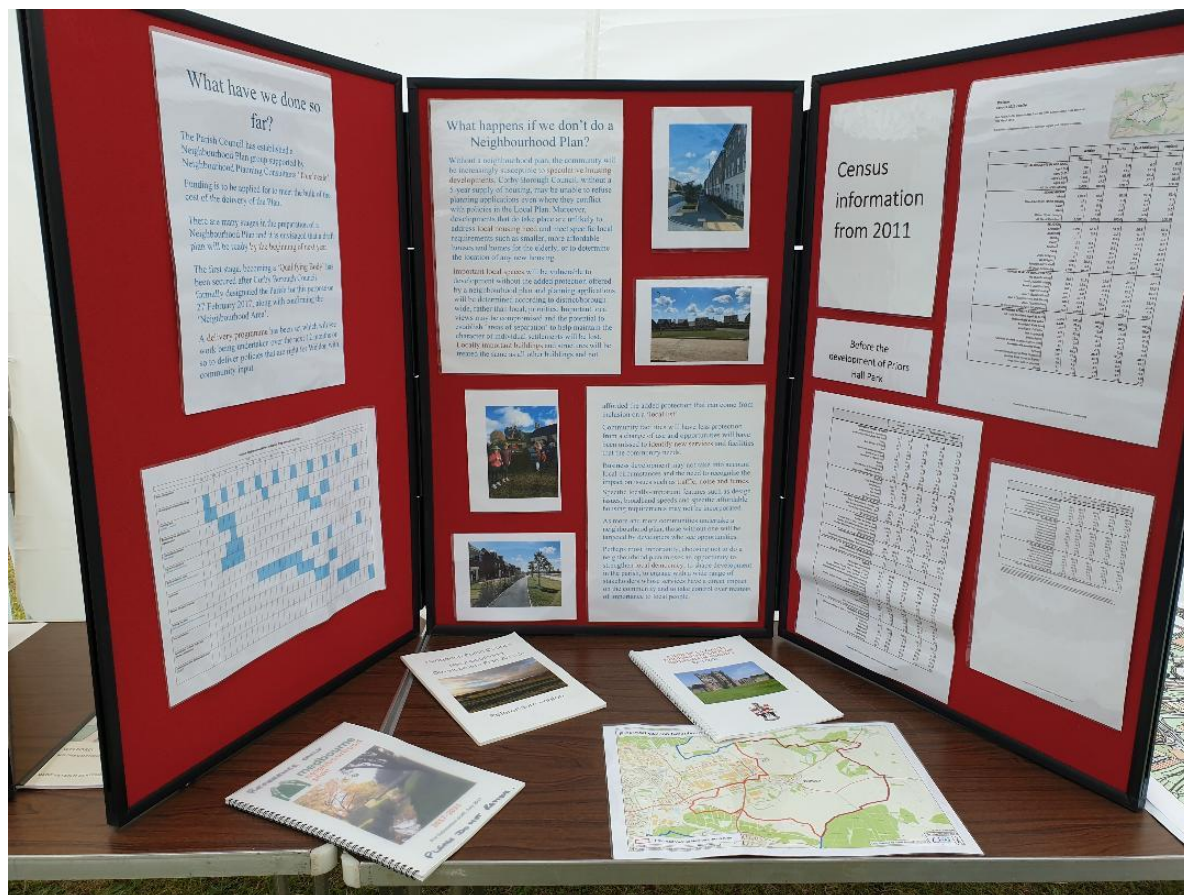
- ✓ Housing – mix, design, location and heritage
- ✓ Environment – existing designations and Local Green Space criteria
- ✓ Transport
- ✓ Employment
- ✓ Community Facilities

People were invited to read the displays and the information available and to make comment on 'post-it' notes.

In addition, people were invited to identify open spaces which are important to them by placing up to 3 green stickers on a map of the parish which they value for views; and up to 3 blue stickers on areas good for recreation. A similar exercise invited people to indicate where they would not welcome new housing, and where residential development would be acceptable.

Display Boards

The following pages give a sample of the boards that were on display at the event. The boards posed questions which people were invited to comment on.



Having read the displays, attendees were asked to comment on each topic using post-it notes and to place them on flip-chart paper alongside each display. These are the comments that were made:

DESIGN:

- Traditional housing design such as the PHP development should be continued
- If housing has to continue make sure the style is kept ie stonework like Persimmons and Mulberry sites

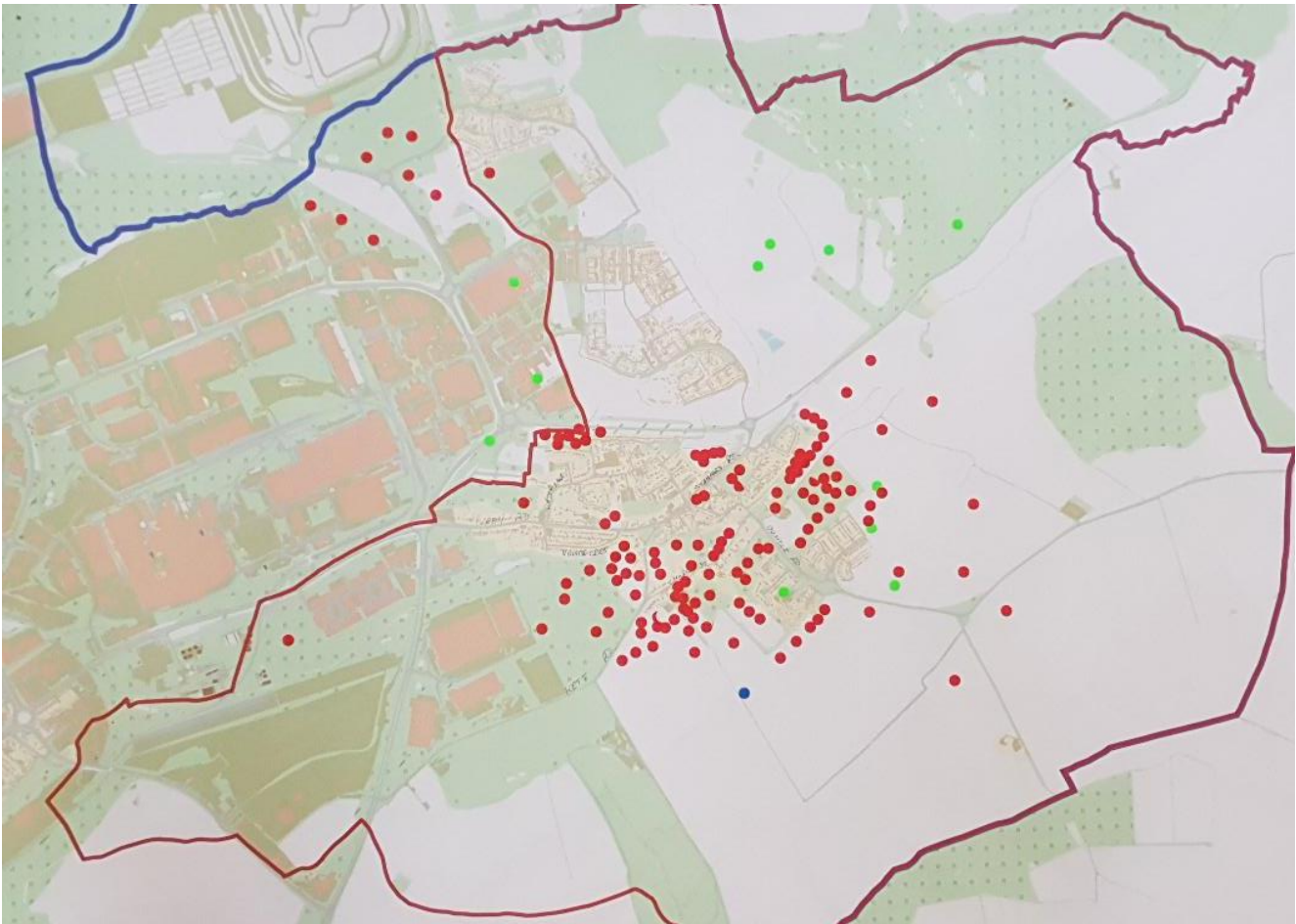
HERITAGE:

- 18 Oundle Rd is the old village workhouse. Grade 2 listed
- 16 Oundle Rd, "Annie Cottage". Grade 2 listed
- Round House; Old School House; Church; The George; The Old Rectory; stone bridge to church; Memorial

HOUSING:

- Housing to be within current style of buildings in Weldon
- Smaller developments needed
- Affordable homes to rent for over 60's near facilities, i.e. shop
- We cannot stop this continued growth of housing but with so many brownfield sites in Corby steel works, why not there?
- Too much development impacts on the infrastructure and can cause problems for all
- Weldon has taken its' share of new houses. Development should now be on the outskirts elsewhere around Corby
- Weldon has had more than its' fair share of development. Please no more beyond what has been granted
- IF new housing is necessary keep density in keeping with surrounding neighbourhood
- Allow enough off-street parking (2 cars per house)
- More housing = more cars=better roads needed. Change the bypass road at Weldon Lakes to dual carriageway!!
- More housing needs more amenities, e.g. schools, doctors, etc. Parking needs to be adequate – 2 cars per house
- Respect the conservation area
- If you act on any of these it would be helpful!

Attendees were invited to indicate where they would not welcome new housing (red dot), and where residential development would be acceptable (green dot).

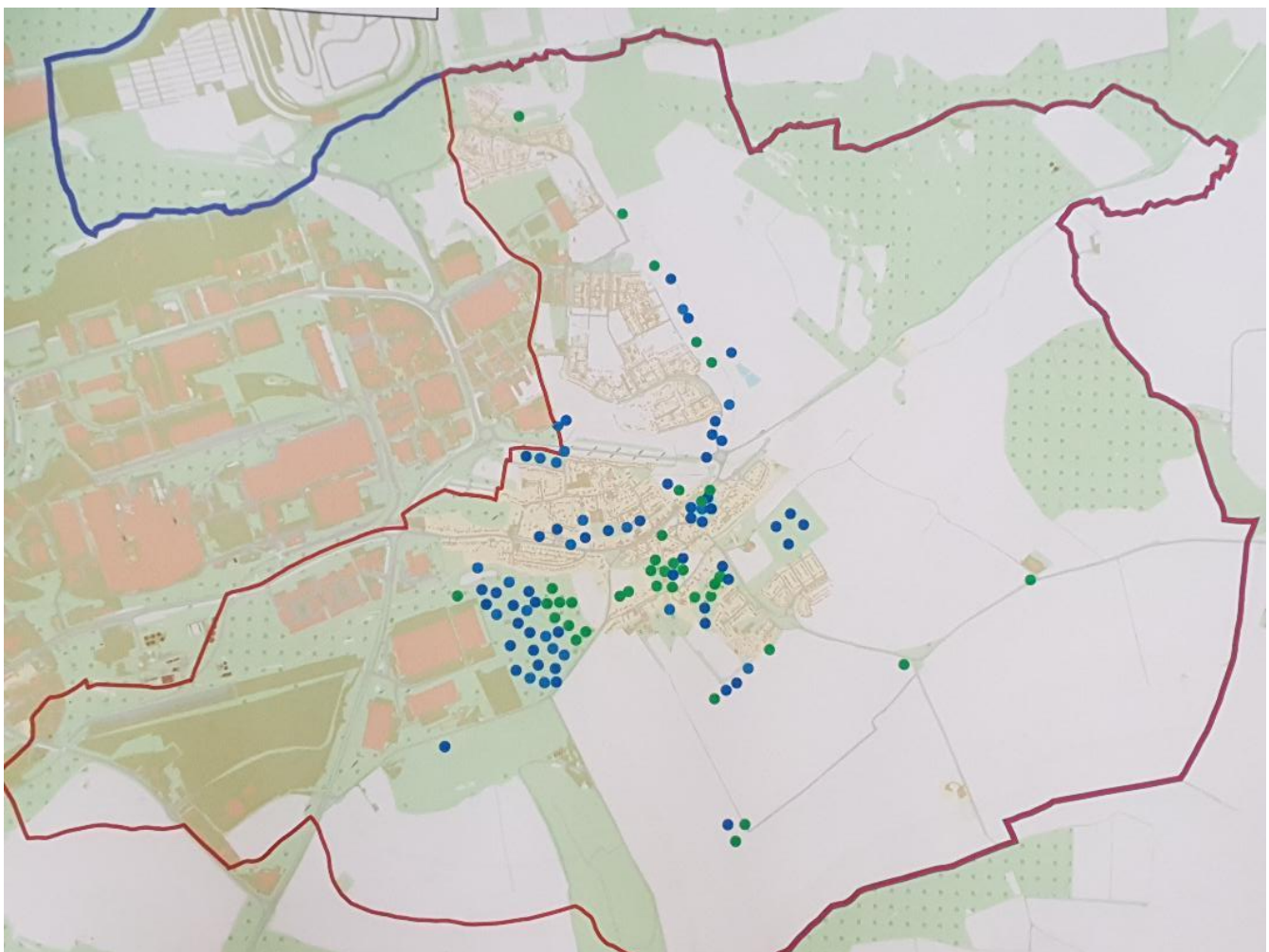


ENVIRONMENT:

- Builders reinstating hedges that they've ripped out
- Shelton Rd development and effects on the environment
- Shelton Rd development. Wrong place, no proper access to the side
- Against Shelton Rd refuse centre. Been built so close to housing
- No to Shelton Rd refuse centre
- No to refuse centre – too close to houses
- No Shelton Rd refuse centre
- Weldon Park should be designated LWS
- We were not given "accurate" information about the Shelton Rd development. I was firmly informed it was for local refuse only
- Why has Priors development got really good children's park when the children of "Weldon" have none
- Improve play area at Woodland Park – plenty of space and teashop!
- Better children's play area in Woodland Park
- How long is it going to take to repair the zip wire in the park that the school children use?
- Woodland Park and Bears Lane need to be protected. Lots of deer particularly in the woods at Bear Lane
- Keep Woodland Park a protected area

- More development of Woodland Park to encourage wildlife
- The Woodland Park needs to be surveyed by wildlife experts. There are currently a very wide range of wildflowers and butterflies etc. there (possible SSI), protected meadow status
- Wildlife has gone!
- Make access to the village difficult. Make use of the bypass and link road easy. Keep commuter traffic out of Weldon
- Close old Stamford Rd with a gate. Stop travellers, lovers, cars racing, yobs
- Shut the Kettering Rd – that will stop the “rat run”
- Leave Kettering Rd as it is. Closing it will add to congestion at Corby Rd and the roundabout
- Weldon is used as a “rat run”

People were invited to identify open spaces which are important to them by placing up to 3 green stickers on a map of the parish which they value for views; and up to 3 blue stickers on areas good for recreation.



ACCESS and HIGHWAYS:

- Better traffic calming
- Slow the traffic down in the village
- Put traffic calming islands on Oundle Rd towards Weldon

- Take measures to stop the volume of traffic using Church St and reduce speeding in Church St
- Reduce traffic calming cushions on Corby Rd with crossroad bumps – cushions damage car tracking
- Road calming through village - Stamford Rd
- Red markings on entry – as Colleyweston
- Speed control needed to slow down motorbikes speeding round Weldon Park roundabout down Oundle Rd and back. Up to 7 hours per day weekends and bank holidays. Noise pollution and an accident waiting to happen
- Double yellow lines just past Londis supermarket; parking on the brow of the hill is very dangerous
- Traffic lights on the bad corner on Oundle Rd
- A43 needs a crossing!
- Crossing on A43. Children cross on foot to catch school buses. Road too fast!!
- More crossings needed. Parking really poor. Would be good to have a cycle path
- Why is the public footpath from Bridge St toward P.H. not cleaned up? Reinstate footpath in PH and establish solar traffic lights
- Please a crossing over the by-pass from Priors Hall to Weldon
- Really dangerous trying to cross Kettering Rd to get to the park!
- Crossing and footpaths from PH Park to Weldon village
- Crossing over A43 to allow better/safer access between Weldon and Priors Hall
- Dangerous crossing over A43 from Priors Hall to Weldon
- The non-crossing at the roundabout linking Priors Hall development will result in a fatality, probably of a child!
- Traffic control on Oundle Rd on narrow turn, also on bridge
- A road from the Holiday Inn roundabout to the new Oundle Rd roundabout and onto the A43 up the new road – this would take most traffic other than local away from the village and vastly improve quality of life
- A road to bypass the village from the Persimmon properties in Kettering/Stanion direction would be handy
- Stop Weldon being a rat run
- Stop Kettering Rd being a rat run!
- Chicane on Kettering Rd?
- Re-direct traffic to avoid being a rat run. 2 others agreed
- Make Church St one way. Stop it being a rat run
- Block off Kettering Rd. 1 other agreed
- Keep Kettering Rd open. Make bridge narrower so lorries can't use it
- Kettering Rd must remain open to 2-way traffic if Corby Rd is blocked for any reason. There is no way into the village for emergency vehicles
- Please don't shut off Kettering Rd. 7 others agreed
- Oundle Rd – 20mph
- 20mph through village
- 20mph zone
- Police van checking speeds HASN'T stopped any speeding cars
- Corby Rd has too much traffic now
- Stop HGV's going through/along Corby Rd

- Save Corby Rd
- Church St should not be a link road from Oundle to Corby. 2 others agreed
- Main roads used for parking and blocks traffic – can this be stopped?
- Motorbikes are the worst for road noise
- Cycle paths through the village
- Better cycle ways
- Put traffic gate into village from Stamford Rd – priority leaving village. Same on Church St
- Gate off old Stamford Rd. Keep travellers out, stop steamed up windows on cars, stop cars racing on road and stop yobs
- Gate off Stamford Rd due to travellers
- Condition of some roads – repairs needed
- Make sure bus route X4 is secured

EMPLOYMENT/BUSINESSES:

- More local business needed to be developed

FACILITIES/AMENITIES:

- General infrastructure not good enough for current housing development
- What can teenagers do? Vast majority aren't "yobs"
- Somewhere to kick a football with my son. I'm in Deene End
- The new playground is welcome. We need a road crossing though
- Traffic lights = more road noise though
- Weldon Woodland Park is a great asset to the local area. It could do with a few more litter bins but otherwise is very well maintained
- Weldon Woodland Park facility – room for events, loo's, cafes, cafe – near car park
- Keep Woodland Park traveller site free. More preventative action needed
- Teashop and Woodland Park for facilities
- Improve pub and parking to encourage it as community hub
- Improve the George
- Tea/coffee shop needed. More meeting places
- Nowhere to meet now that Le Cafe closed. Really need a cafe in the centre – not a chain (Starbucks) at the end of the village (Priors Hall cafe is great!)
- More bins around village for dog waste
- More trash/ garbage bins and bins for dog waste
- Turn all the street lights back on
- More police for the area. More local shops
- A new hospital for all the new houses
- Hospital facility
- Cycle track around the village

ANYTHING ELSE?

- A great opportunity to shape the future of our parish

- Communicate on a monthly basis with the whole parish
- More awareness of meetings would be good. 1 other agreed
- Good event – great way to see what’s going on
- Great to be able to see them and meet and share views with other villagers
- Update website and keep it updated
- Bypass the village
- Make Church St one way before an accident happens, as no footpath and high volume of traffic
- No pub please on Priors Hall
- Family pub on P.Hall
- A hospital please asap
- Close off Kettering Rd between park entrance and refuse tip to stop road being used as short cut. 1 other agreed
- Stop parking in layby by George pub. Obstructs level crossing
- A path outside no 3 Oundle Rd so we don’t have to put ourselves and visitors at a great risk
- Crossing on A43 before child gets hurt
- Safe crossing place from Weldon village to Priors Hall

Summary of findings:

Housing:

Out of a total of 13 comments on housing in the parish, the majority of respondents expressed concern over the negative impact any further development may have on Weldon. For example, impact on the pre-existing road safety and parking situation, and on the village’s infrastructure generally.

Heritage:

A total of 3 parishioners highlighted specific properties as being important to the heritage of the village, some of which they believed to be grade 2 listed.

Environment:

23 comments were made on the environment section. 7 responses expressed concern over the impact Shelton Rd refuse facility has had on the village.

5 parishioners called for the protection of a particular local green space – Woodland Park - including its wildlife areas, flora and fauna.

5 responses reflected concern on the detrimental impact traffic congestion and speeding is already having on Weldon’s natural environment.

Access and Highways:

This area of the consultation drew the largest number of responses by some way, with a total of 59.

In the event of development, the majority of respondents highlighted the need to provide more traffic calming, traffic management, safer road crossings and pathways, road maintenance and adequate, safe parking areas in an already congested village. A number of specific areas in the village were named in relation to these concerns: Kettering Rd; Church St; Corby Rd; Stamford Rd; Oundle Rd; current unsafe crossing situation for the A43. Several parishioners find that Weldon has become a traffic “rat run”.

2 respondents cited the importance of improving the village’s cycleways, and one person wished for the X4 public bus service to be protected.

Design:

The 2 responses to this section called for any development design to be of a traditional style, as exemplified by the Priors Hall development.

Employment/Businesses:

The sole respondent called for more local business to be developed.

Facilities/Amenities:

There were 20 comments generated by this section. Weldon’s Woodland Park was recognized and appreciated by a number of residents, but they also saw room for improvement in terms of its’ existing facilities, e.g. new or improved toilets, café, events space, litter/dog waste bins.

Other responses reflected a desire for more communal meeting places, including for the village’s children and young people. The George pub was cited as a potential community hub but needing improvement. 2 respondents called for a hospital for the parish.

Anything Else?

There were 16 responses to this section, the majority of which reiterated the range of traffic concerns already expressed. 6 parishioners made appreciative and positive comments/suggestions regarding the Community Consultation event itself, citing the opportunity it provided for meeting and sharing views - a “great way to see what’s going on” and “ a great opportunity to shape the future of our parish”.

Images of the event are shown on the following pages:





